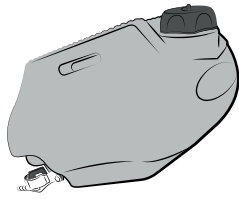
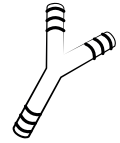


REAR AUXILIARY TANK - Lt. 6 - 1,58 GAL. SERBATOIO AUSILIARIO - Lt.6

ACERBIS

COD. 500006076 REV1

**A** - (1 pcs.)**B** - (1 pcs.)**C** - (2 pcs.)**D** - (1 pcs.)**E** - (1 pcs.)

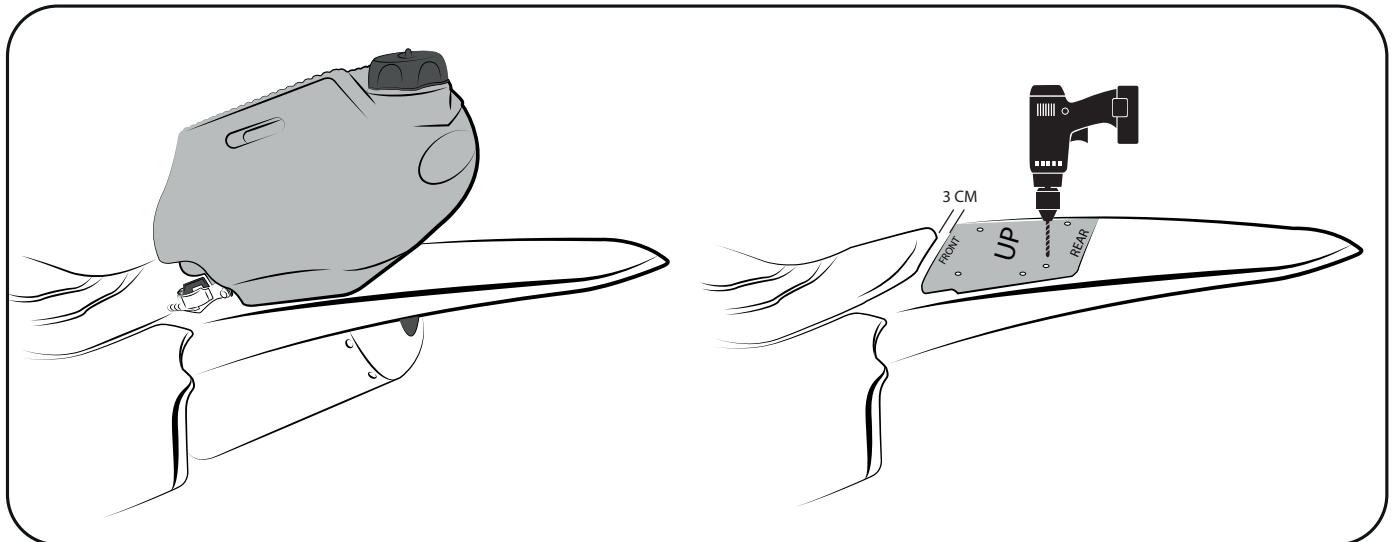
WARNING



Durante il rimontaggio suggeriamo vivamente di utilizzare un grasso anti-grippante su tutte le viti.

Highly suggest to use anti-seize/grease lubricant on all bolt threads going into the tank's metal inserts when reinstalling.

CARBURATOR USE ONLY SOLO MODELLI CON CARBURATORE



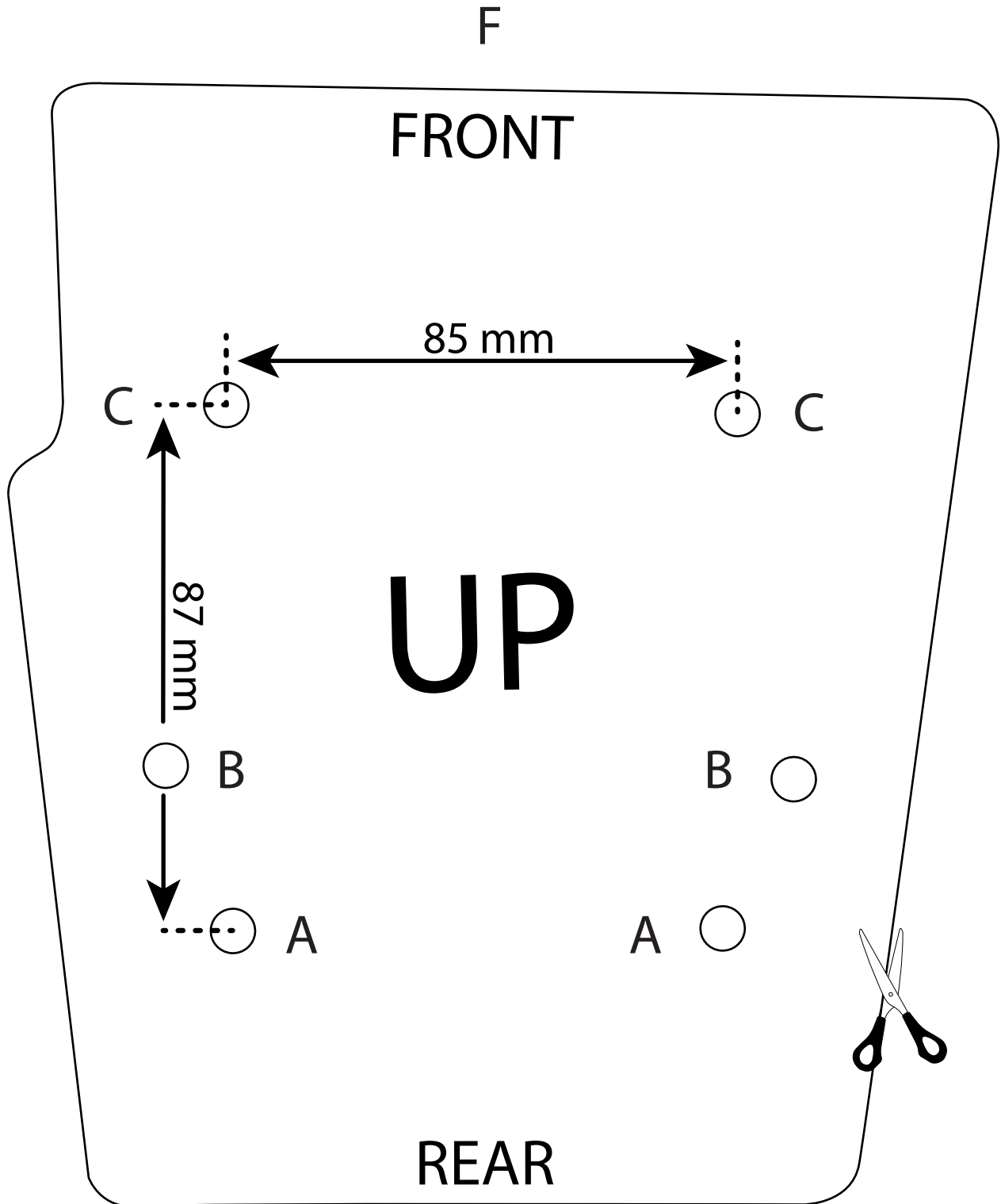
Ensure that the rear fender must be fixed on the frame. Cut the template (F). Place the template (F) with the fuel tank (A) in the same position indicated in the draw (3 cm from the seat). Using the template (F) mark the rear fender doing 4 holes with diameter of 7 mm. Make a holes using on the flyer the point AA+CC or BB+CC. Ensure that the holes correspond with the insert in the fuel tank (A). Assemble the fuel tank (A) with the screws M6. Connect the pipe (B) on the fuel tank's petcock (A) using the zip tie (C). Close the original petcock. Cut (the correct dimension) the original fuel pipe. Use the connector (E) in the original tube, introducing in the connector (E) the original pipe than the pipe (B). Fix the pipe with the original zip tie and the zip tie (C). Put the cap (D) on the cap of the fuel tank.

Verificare che il parafango sia ben fissato al telaio. Tagliare la dima (F). Posizionare la dima (F) insieme al serbatoio (A) nella posizione indicata nel disegno (3 CM dalla sella). Utilizzando la dima (F) segnare il parafango, quindi fare 4 fori diametro 7 mm. Forare AA+CC oppure BB+CC. Verificare che i fori corrispondano agli inserti presenti nel serbatoio (A). Montare il serbatoio (A) utilizzando viti M6. Collegare il tubo (B) al rubinetto del serbatoio (A) utilizzando la fascetta (C). Chiudere il rubinetto benzina originale. Tagliare (valutare il punto ideale) il tubo benzina originale. Inserire il raccordo (E) nel tubo originale, quindi inserire nel raccordo (E) sia il tubo originale che il tubo (B). Fissare i tubi con la fascetta originale e la fascetta (C). Inserire il tappino (D) al tappo del serbatoio Acerbis.

REAR AUXILIARY TANK - Lt. 6 - 1,58 GAL.
SERBATOIO AUSILIARIO - Lt.6



COD. 500006076 REV1



REAR AUXILIARY TANK - Lt. 6 - 1,58 GAL. SERBATOIO AUSILIARIO - Lt.6

COD. 500006076 REV1

LIBERATORIA

LIBERATORIA: A causa di variabili inponderabili nel processo di stampaggio rotazionale dei serbatoi, questi possono differire in forma e dimensioni fino al 7% rispetto alla capacità dichiarata.

**FOR COMPETITION USE ONLY
SOLO PER USO AGONISTICO**

Thank you for purchasing an ACERBIS fuel tank

WARNING

It is **EXTREMELY IMPORTANT** that the fuel tank be properly installed. To ensure proper installation, it is **STRONGLY RECOMMENDED** that the tank be installed only by a qualified OEM licensed dealership mechanic. Improper installation could result in serious injury or even death.

If self-installed NOTE THE FOLLOWING. Particular attention must be paid to excessive fuel line length and fuel line proximity to hot engine areas and pipes to prevent fire.

Clean tank interior thoroughly before installation. Install this fuel tank only in a well ventilated area, as gasoline fumes are extremely dangerous. Do not start or operate the vehicle if there are any fuel leaks! Read all instruction first before beginning installation.

DISCLAIMER

Due to uncontrolled variables in the manufacturing process of rotationally molded fuel tanks, the fuel tank may vary in size and shape by up to 7% of the manufacturer's original listed capacity.